

Direct Report Relationship to CNO

Indirect Report Relationship to CNO

Janet Cunningham, MHA, BSN, RN  
Interim Chief Nursing Officer, Prisma Health Richland Hospital

Fauntella Lowe, MSN, RN  
Director  
Children's Hospital Administration  
ICU Pediatrics, Peds School Age-, Adolescent, Peds Infant-Toddler, Children's Blood Disorders, Pediatric Sedation, Special Projects - Children's Hospital, Peds Hem/Onc Office Services

Nurse Managers:  
Christian Simensen, BSN, RN  
Cari Hill, BSN, RN  
Julie Lincicome, BSN, RN, CPN  
Latonia Manigo, BSN, RN  
Sherry Gillette, BSN, RN  
Wendy Hart, MHA, MSN, RN, CNML, CPN  
Mandy Felder, BSN, RN

Kelly Melton  
MSN, RN, RNC-OB  
Director  
Women's Services Administration  
Women's Educational Programs, The Family Birthplace, Family Beginnings, 4E OB/GYN, Neonatal Intensive Care

Nurse Managers:  
Felicia Wesley, BS, BSN, RN, C-EFM  
Lynn Wellman, MS, APRN, WHNP WHNP-BC, C-EFM  
Renee Washington, MBA/HCM, MSN, RN, C-EFM  
Elizabeth Green, BSN, RN

Effective 10/15/20

Kimberly Wallace, BSN, RN, PCCN-K  
Director  
Heart Hospital Administration  
Hartwell Suite, ICU Cardiovascular, Marion Suite, Coronary Care Unit, Moultrie Suite, Heart Failure Clinic, Murray Suite, Heart Hospital Transport

Nurse Managers:  
Geraldine Frierson-Peay, BSN, RN, PCCN  
Mary Brodie, MSN, RN  
Melissa Berzins, BSN, RN, CCRN  
Sarah Clement, BSN, RN, CCRN  
Tonya Sanchez, BSN, RN, CCRN

**NOTES:** Women's Services Administration includes Perinatal Systems; Emergency Trauma Center includes Adult, Peds and Mental Health ED; Cardiovascular Services includes Cardiovascular Outcomes

Samantha Cain, BSN, RN  
Director  
Adult Acute Care Services  
Medical Nursing-10E, 8E Orthopedics, 11E-Medical Oncology, Nephrology, 8W Accountable Care Unit, 9 East Acute Care of the Elderly

Nurse Managers:  
Alfreda Oree, MSN, RN  
Amy Elliott, BSN, RN  
Jaycelyn Morant, BSN, RN, CMSRN  
Carol Ackerman, BSN, RN, OCN  
Susan Gossett, BSN, RN

Sterlin Carpenter, MSN, MHA, RN  
Director  
Intensive Care Nursing  
Surgical Nursing-7E, STICU, Surgical Stepdown Unit, MICU, Medical Stepdown Unit, 9W NSI, Neuroscience and Stroke Unit, Rapid Response Team

Nurse Managers:  
Amanda Cotter, MS, MSN, RN, SCRN  
Ashley Arnett, BSN, RN  
Sarah Malatesta, BSN, RN, CCRN  
Jeanne Huntley, BSN, RN, CMSRN, CNM-L, SCRN

Michael Rawl  
BSN, RN  
AOD Operations Manager  
Nursing Administration

Lisa James, DNP, RN, MHA, NEA-BC,  
Interim Director  
Emergency Trauma Center

Nurse Managers:  
Lindsay Dowd, BSN, RN, CPEN  
Vacant

Lisa James  
Associate Chief Nursing Officer, Prisma Health Richland Hospital

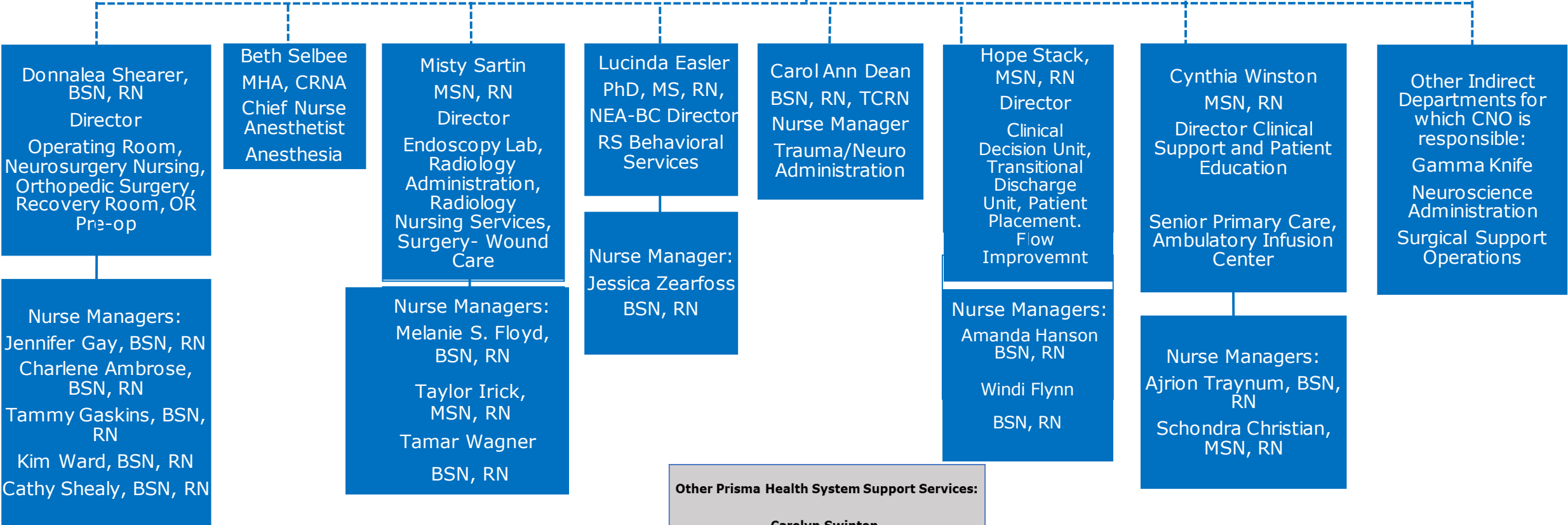
Brenda Rankin, BSN, RN  
Admin. Dir.  
Children's Service Line

See indirect reports to ACNO on next page.

Susan Low  
BSN, RN  
Executive Director, Cardiovascular Services  
Cardiac Catheterization, Heartlife

Nurse Managers:  
Brenda Miller, BSN, RN  
Jennifer Morris, BSN, RN  
Victoria Yandle, BSN, RN

# Indirect relationships to Associate CNO and CNO



**Other Prisma Health System Support Services:**

**Carolyn Swinton,**  
Chief Nursing Officer  
Prisma Health

**Haley Bush**  
Director, Clinical Education

**Angela Orsky**  
VP-Post Acute Services

**Kristin Vondrak**  
SVP-Quality/Safety/Reliability

Direct Report Relationship to CNO —

Indirect Report Relationship to CNO - - -

Effective 10/15/20