

1 SECOND FLOOR PART PLAN - EAST
SCALE 1/4" = 1'-0"

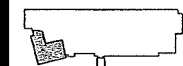
**SHEPLEY
BULFINCH**

200 West Main Street
New Haven, CT 06510
203.762.1000
shepleybulfinch.com

YaleNewHavenHealth
Greenwich Hospital

November 2019

NO.	REVISION



YNHH GHC
INPATIENT BED
REALLOCATION

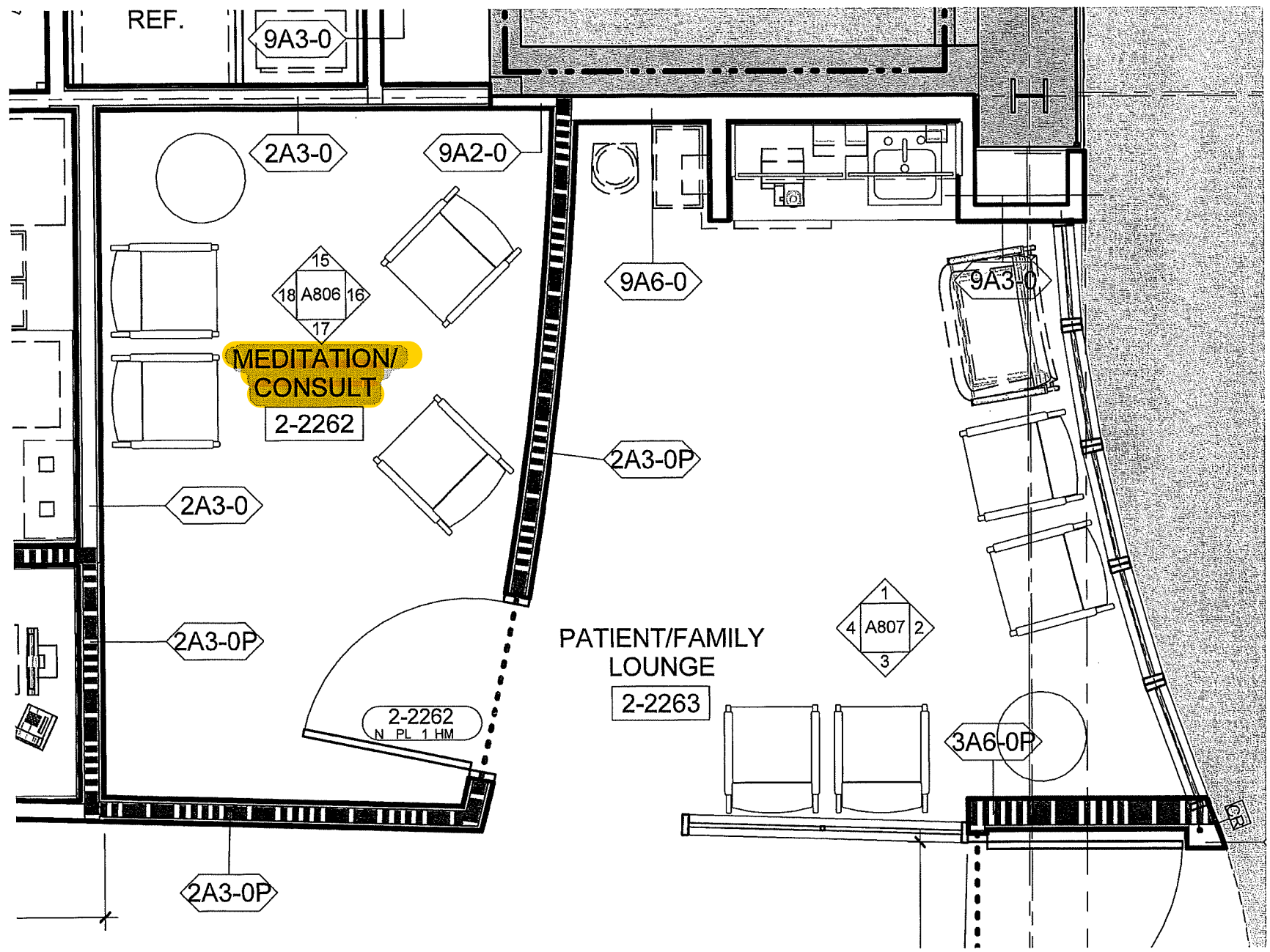
3 November 2019
10:00 AM
20191103-101

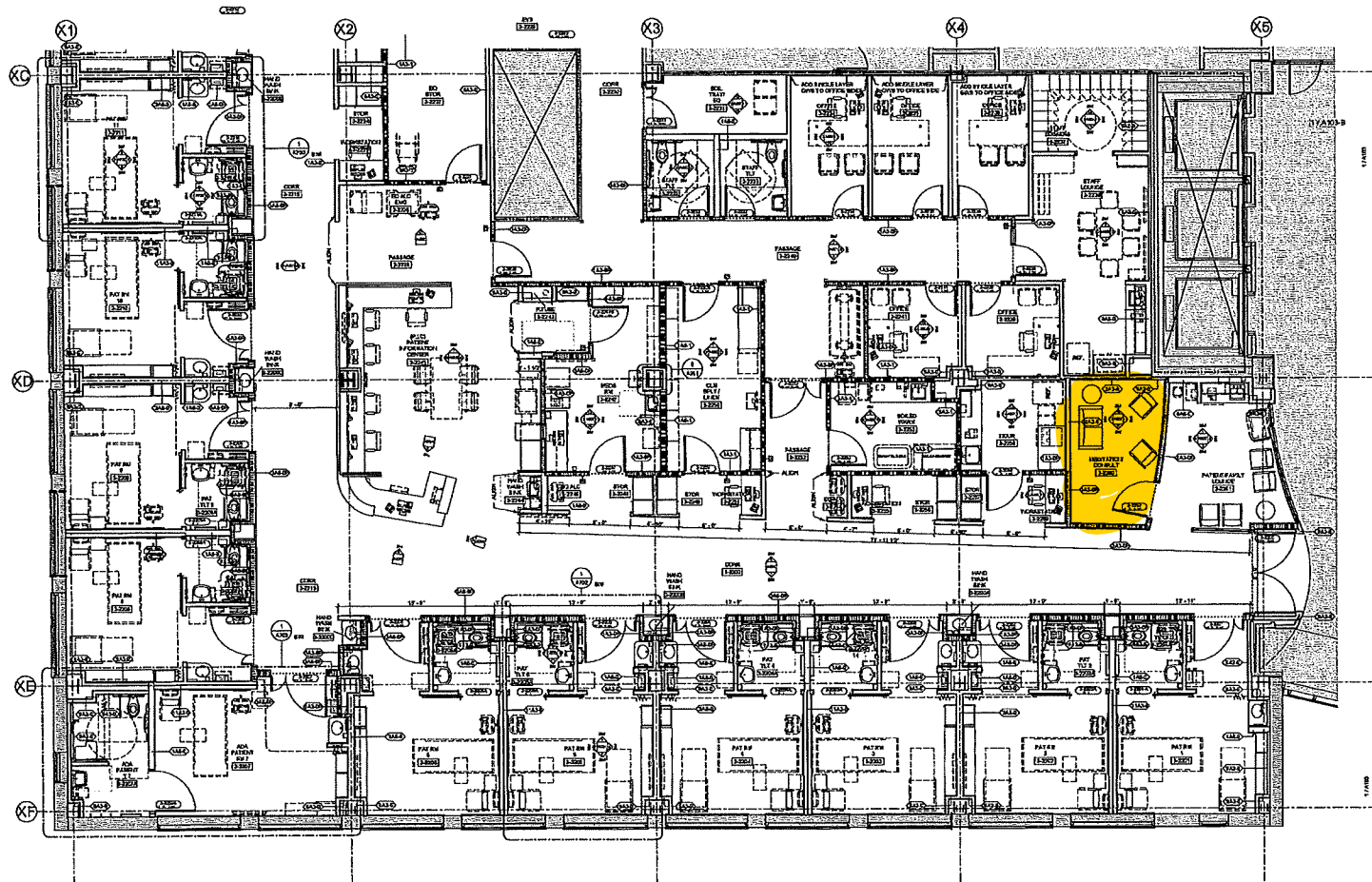
SECOND FLOOR
PART PLAN - EAST

A102-A

091319 001 PKG 6

YNHH GHC INPATIENT BED REALLOCATION





1 THIRD FLOOR PART PLAN - EAST
SCALE: 1/4" = 1'-0"

SHEPLEY BULFINCH

2 BROADWAY
NEW YORK, NY 10004
212 694 3200
shepleybulfinch.com

YaleNewHavenHealth
Greenwich Hospital

NO.	DATE	DESCRIPTION



YNHH GHC INPATIENT BED REALLOCATION

© Copyright Shepley
Bulfinch Architects LLP
2017/07/07/18

THIRD FLOOR PART
PLAN - EAST

A103-A

09/18/18 ISO PLOTT 4

SHEPLEY BULFINCH ARCHITECTS
 THIRD FLOOR INPATIENT BED REALLOCATION

